

'Serving up the seasons'

Why should we care about local, seasonal food?

Oliver Rubinstein

National Farmers Union

Oliver.Rubinstein@nfu.org.uk

07900 743 382

NFU supported by

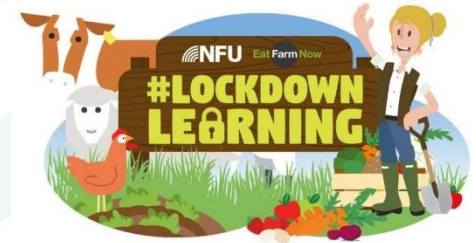


NFU Mutual



The NFU?

- Represents 55,000 members across England and Wales.
- All sectors and farm types.
- Organic & Environment Forums.
- Run by farmers.
- Founded in 1908.
- 12 offices including Westminster and Brussels.
- Advice guidance and support for members.



SIGN THE FOOD STANDARDS PETITION NOW!

I want the food I eat to be produced to world leading standards.

Our Government should ensure that all food eaten in the UK – whether in our homes, schools, hospitals, restaurants or from shops – is produced in a way that matches the high standards of production expected of UK farmers. Covid-19 has highlighted the importance of food security and traceability.

I believe the UK Government should seize the opportunity of 'Global Britain' to promote sustainable models of production and consumption across the world.

Farming throughout the UK has high standards of safety and welfare with an ambition to be net-zero or greenhouse gas emissions by 2040. There are very strict controls on farming methods allowed in the UK and respect the same of all food which is imported here so the food I eat is as safe, traceable and produced to high welfare and environmental standards.

Before the UK begins to negotiate trade deals with countries around the world, I call on the UK Government to put into law rules that prevent food being imported to the UK which is produced in ways that would be illegal here.

1,057,223

NFU supported by



NFU Mutual



What do we mean by local?

- British? Regional? Local?
- Carbon footprint of UK food vs imports?
- Average carbon footprint of UK beef is c.50% of the global average, dairy is c.40%
- One of just six countries given the highest grade in World Animal Protection Index



Guidance Environmental Land Management schemes: overview

Published 15 March 2021

Contents

[Sustainable Farming Incentive](#)
[Local Nature Recovery](#)
[Landscape Recovery](#)
[Tests and trials](#)
[Stay up to date](#)

[Print this page](#)

There are 3 new schemes that will reward environmental land management:

- Sustainable Farming Incentive
- Local Nature Recovery
- Landscape Recovery

These schemes are intended to support the rural economy while achieving the goals of the [25 Year Environment Plan](#) and a commitment to net zero emissions by 2050.

Through these schemes, farmers and other land managers may enter into agreements to be paid for delivering the following:

- clean and plentiful water
- clean air
- thriving plants and wildlife
- protection from environmental hazards
- reduction of and adaptation to climate change

NFU supported by

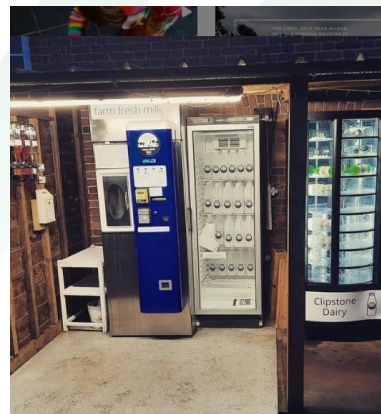


NFU Mutual



Local sourcing - benefits

- Transport emissions?
- More equitable, transparent supply chains
- Opting out of volatile markets
- Greater engagement with food and farming
- Consumers can directly incentivise and support farmers
- Easier to measure and manage
- Shifts balance of power towards producers
- More flexible and responsive – food waste?
- Resilience
- Selling point for businesses



The definitive guide to "the Preston model"

CLES and Preston City Council release the definitive guide to "the Preston model"

The Centre for Local Economic Strategies (CLES) and Preston City Council release a joint publication, telling the story of the ground-breaking "Preston model".

Entitled How we built community wealth in Preston: achievements and lessons, it is the definitive guide to the "Preston model" and tells the story in more detail than ever before.

The impact of community wealth building - the theory that underpins the work - has been significant, with dozens of localities following Preston's lead in working with CLES to develop their own approach.

The publication reflects on eight years of collaboration between CLES, Preston City Council and local anchor institutions. It outlines key achievements, offers reflections on the journey and maps out possible next steps.

Key outcomes

- The most recent spend analysis found that the procurement from institutions rooted in Preston retained within the city was £112.3m - a rise of £74m from 2012/13.
- Within the wider Lancashire economy (including Preston) £488.7m of spend had been retained, a rise of £200m from the baseline analysis.
- Since the inception of the project, 4000 extra employees in Preston are now receiving the Real Living Wage (2018 initial ONS output).

Vulnerability of the UK's food supply chains exposed by COVID-19, study reveals

Posted on 4 June 2020

The UK has been left "dangerously dependent" on just two EU countries for its fresh vegetable imports, a new study on the impact of the coronavirus pandemic on the UK food system has revealed.



NFU supported by



NFU Mutual



Local sourcing - challenges

- Market demand & saturation
- Processing facilities
- Distribution
- Administrative burden & size of orders
- False provenance
- How to scale up



Small abattoirs facing increasing pressure: What is the future of local meat?

by Megan Perry - Head of Communications on 8 November, 2019 in Food Policy

Is the UK's network of small abattoirs on the brink of collapse? Having lost more than sixty small abattoirs over the past decade, the UK was down to just 108 small red meat abattoirs at the start of this year. Since then, and despite efforts to address some of the problems, a further three have closed. Many more are seriously struggling to stay in business and without urgent action from the Government, we are likely to see a catastrophic loss of small abattoirs across the country. This would have a

NFU supported by



NFU Mutual

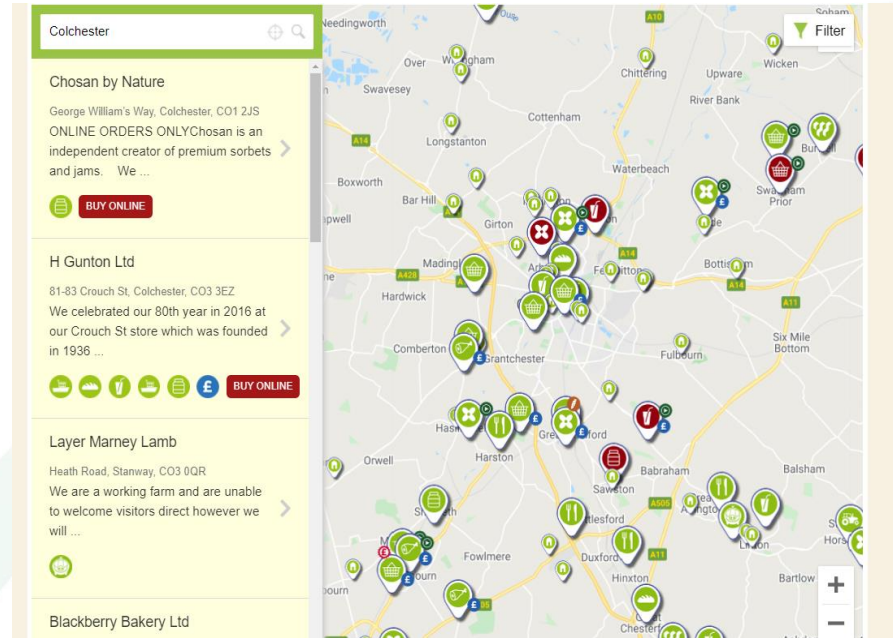


Solutions



- Procurement policies
- Work with farmers
- Food Hub
- Big Barn CIC
- Investment in local processing

Ownership, transparency, accountability



NFU supported by



NFU Mutual

